



Edith Streiner

Open For Summer Fun

Hugh Flowers

Uki Mountain Bike Park



In case you were wondering, yes, all those push bikes in town recently are because of the new Uki Mountain bike trails.

After 13 years of community effort, the Tweed Valley has its first dedicated mountain bike park situated only 1.3km from Uki on Smiths Creek Road.

The 6.5km of trails were built by professional trail building company Trailworx thanks to a \$430,000 grant obtained by Tweed Shire Council from NSW Department of Sport and Recreation.

The trails are free to use and open 7 days a week from 6am to dusk throughout the year (weather permitting). The trails are managed in coordination between Tweed Shire Council and Tweed Valley Mountain Bike Riders for maintenance, events clinics and general operations. But how will this affect Uki? What are the benefits to our community? What are the disadvantages?

As a club, Tweed Valley Mountain Bike Riders always pitched this as a community facility for Tweed. It is one of the few outdoor recreation spaces that does not require participants to pull on a jersey or pay a club fee. Its aim is to provide a safe space for kids of all ages to enjoy and explore, learn new skills and get outside. This seems to be working already. We are mindful that there are more locals than just mountain bikers and our accessible outdoor spaces are few.

While the “constructed” trails are only for riders – the club shall be maintaining walking access to the best view points on the property for the community. The hope being that we can encourage more than just riders to utilize the facility on a daily basis.

Tweed Shire Council has plans to expand the picnic facilities to make it even more attractive for families and stop overs. And so far, it’s working. To date, the park is getting an average of 170 people per day on the trails (obviously weekends are busier) and they typically do 4 to 5 laps covering about 11km on average. This will take most people about 1.5 to 2 hours, so there is a high rotation of car parking. At this rate it means approximately 66,000 visitors per year and 695,000 km ridden by people per year. Since the park opened riders have done more than 40,000 laps of the park, good thing we expanded the car park.

And these are some of the issues. On weekends the facility maxes out with 90 cars parked at peak times, we do not want to place pressure on Uki’s already limited parking. It also contributes to carbon emissions, which is why we are working with various groups to revegetate the disused farm land back to native vegetation. Bilambil Primary school are our first tree planting with a 200 Mixed species Koala plantation in late October. The clubs plan is to plant over 5000 trees in the next 5 years to offset carbon emissions and improve habitat and biodiversity in the area. Its early days still. The club is looking forward to beginning skills clinics for local riders, regular maintenance days on site and working with the local school to get them involved. While we will not threaten the Rail Trail for popularity the local health and economic benefits should be positive enough to perhaps bring more outdoor recreation facilities to the Tweed.

How can you get involved? Contact the club at club@tvmtbr.com.au



**Mountain Bike
Park closed
in wet weather**

Details on page 14 ...

From the Editors

Welcome

To the 133rd edition of the Uki News for the summer of 2023 - 2024

After one of the driest years in living memory, every little drop of rain is appreciated by the parched countryside. Some decent rainfalls in November has reduced the severity of the danger of bushfires at least temporarily!

Uki Village lights up for late night Christmas shopping on Thursday evening December 7th with many businesses joining in to the festive occasion.

As time marches on, we bid farewell to more local pioneers of the off-grid movement and reflect on their legacies to our community.

2024 promises many new challenges and opportunities both individually and as a caring community.

Look out for each other.
Be kind.
Everyone has a different journey.

The Editors

Contact Uki News: theukinews@hotmail.com

ADVERTISING

Business card size	\$30	Half page	\$100	All Advertisers will receive an invoice Advertising revenue helps fund the Uki News
Quarter page	\$60	Full page	\$200	

Disclaimer: The opinions and views expressed in this newsletter are not necessarily those of the Uki News nor of UKIRA.

Uki News is printed by Uki Community Technology Centre (aka CTC) at the Buttery building.
Current and past issues are available at Uki Village website - www.ukivillage.com.au/uki-news

*The Uki News is a free, bimonthly publication by the Uki Village and Districts Residents Association (UKIRA).
It is delivered to most households on the South Arm of the Tweed River.
Copies are also available at various local outlets, including the Uki Supermarket.*

Letters To The Editor



Dear Editors,

I recently came across your Uki News (edition 132) and was both saddened by the passing of "Mrs Daly" yet interested in reading about her life.

As a past resident of Chowan Creek Rd, I remember as a child (a loooong time ago) Mrs Daly. We had used her house as a marker as it sat at the junction of Rowlands creek and Chowan creek roads.

Hence "Daly's corner" became a geographical reference point for us all.

I remember her working at the Uki school tuck shop and most definitely the Uki sporting horse association days held on her property.

As a young boy who didn't ride, but still had to walk the cows to and from the local dip-yard I often watched all the events thinking how much easier 'dipping' would be with a horse to save my legs.

Then one day I heard the loudest 'crack' of a leg breaking from a man falling off his horse and quickly decided that

walking behind the cows wasn't so bad after all. So thank you for your respectful and informative remembrance of Ida and for my trip down memory lane (or should that be road).

Condolences to her family.

I've spent an enjoyable few hours skimming through some past editions and seeing names that I knew from the 'before time'.

The Arnolds, Duckworths, Hardings, Bianchettis, Brims, and Sweetnams, to name but a few, were all there when I was and while I daresay they remember my parents more than me, it's good to see some 'anchor' names still in the village.

I see the tennis court has been turned into a public green space with a small 'humpy' structure in it.

Well time to go before the (more) rambling starts.

Kind regards,

Raymond Bryant

(ex) Chowan Creek Road resident,
now in Whistler, Canada



Smallbizfit.com.au

Tailored business systems saving you time & money

Geoffrey Colwill
0427 701 892
geoffrey@smallbizfit.com.au

UKI AUTOMOTIVE

ACN 638 213 171

Brendon Veares
Matt Clark
DIRECTORS

Ph: (02) 6679 5225 A/Hrs: 0468 937 090
1504 Kyogle Rd, Uki, NSW 2484

Word from UKIRA

by Phil Carr

What is UKIRA?

One of the reasons Uki is such a great place to live is its active community.

Are you familiar with these amazing community groups in Uki – all run by volunteers?

Uki Sporting Horse; Uki Pythons Football Club; Uki Sport and Recreation Club; Uki Public Hall; Uki Historical Society; Uki Parents and Citizens' Association; Uki Community Technology Centre (CTC); Resilient Uki; Uki Moon Theatre; Mt Warning Community Preschool; also the following groups auspiced by UKIRA: Images of Uki (art exhibitions); Uki Village Gardens; Little Gallery.

(Apologies if we have missed anyone.)

But people often ask: "What is UKIRA"?

Like most of the above groups, the Uki Village & Districts Residents Association (UKIRA) is a not-for-profit organisation run by volunteers.

However, while these groups were usually established to meet a specific community need, UKIRA's aims are more community-wide.

UKIRA formed in 2001 with grand ideas about 'town centre' projects and community engagement. The Uki News and the UkiVillage.com.au website were early initiatives.

Public meetings identified community values around: music & arts, sustainability, development controls, tree planting & river care, history & heritage.

On the back of these meetings, in 2003, UKIRA took the once-in-a-lifetime opportunity to purchase the Uki Butter Factory. Made possible by a government grant and a loan from the Southern Cross Credit Union, this deal put one of Uki's most prominent buildings in the hands of the community. It came also with responsibility for running the long-established Uki Buttery Bazaar Market.

Much needed maintenance and landscaping work was funded through more grants, and it wasn't long before the Butter Factory became fully tenanted with a diverse range of local small businesses.

Despite substantial overheads, rental income from the Butter Factory now produces an income stream that UKIRA can channel into the community.

It is indeed a wonderful notion that the historic Uki Butter Factory found a new way to support its community.

If you are interested in helping or would like more information, come along to one of UKIRA's public meetings or drop us a line at ukiresidentsassociation@gmail.com

UKIRA meets on the first Tuesday of every second month at the rear of the Uki Hall starting at 7:00PM.

Next meeting will be 6th February 2024.



all pies and cakes are made on the premises
Open six days Monday to Saturday from 7 to 3
Located at the rear of the Buttery
Phone orders welcome
Great coffee
School lunches delivered to the school
ph 0407 198 707



Premium products made from ginger grown and harvested in Uki and the Tweed Valley
Gluten Free - Vegan
Available at the Uki Supermarket



Domestic & commercial installation & repairs
rewiring, meter board upgrades,
safety switches, smoke alarms, security systems,
telephone and data cabling
Level 2 accredited electrician
metering, service lines, connections
Quality workmanship guaranteed
phone George for friendly service & honest advice
ph: 66795915 fax: 66795910 mob: 0411 185 811
10 Church Hill Uki NSW
george.arronis@bigpond.com

ADVERTISE HERE

For
YOUR BUSINESS DETAILS

to be
Distributed to 1200 residents living between
Byangum Bridge and Tweed Shire boundary

PLUS

Average over 3,000 readers of online
PDF version at www.ukivillage.com.au

BUSINESS CARD

Landscape - 92.5mm Wide X 62.5mm High

\$30 per issue

QUARTER PAGE

Portrait - 92.5mm Wide X 129mm High

\$60 per issue

HALF PAGE

Landscape - 190mm Wide X 129mm High

\$100 per issue

Send your details and artwork to
theukinews@hotmail.com

Invoice after publication - published bi-monthly Ads continue in subsequent issues
unless advised otherwise before advised deadlines. Reminder emails sent.



Nimbin Legend of the Rainbow passes ...

Vale Peter Pedals

It is with great sadness that the Rainbow Power family shares the news of the passing of our founder, Peter 'Pedals' van der Wyk, on Saturday September 16th.

Pete was a true pioneer of the renewable energy industry. Author of the seminal work on home made energy systems, *Energy From Nature*, his passion for renewable energy was a constant part of his life.

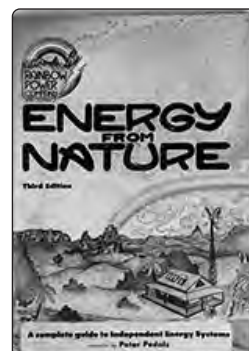
From his pedal-powered juicer, which saw him feature on 'That's Incredible' in the early '80s to the foundation of his 'dream child' with two mates in the late '80s.

That dream child was Rainbow Power Company. Long before the Clean Energy Council, Peter helped produce the first off-grid solar accreditation, that gave many titans of the industry their first taste of renewable energy.

Even after retiring, he continued to pursue his passion, coming into Rainbow at least once a week to gather components for his latest project.

He will be missed by all of the RPC family.

Max Pike



CTC@Uki
Community Technology Centre
The Buttery
1454 Kyogle Rd Uki
P.O. Box 3404 Uki NSW
ctc.uki.nsw@gmail.com
Ph/Fax: (02) 6679 5399
ABN: 89 292 130 424

- @ Print Shop
- @ IT Assistance & Tuition
- @ Internet, Adobe Suite
- @ Office Services
- @ Web Design
- @ VHS to DVD
- @ Membership Available

Uki Supermarket
Friendly service....
Groceries Fruit & Veg
Gluten-free & Organic Products
Meat
Ice
Fuel
Gas
Open weekdays 7.30am to 6pm
Sat & Sun 8am-5pm
Main Street, Uki Ph: 6679 3136

UKIRA wants to acknowledge Rowlands Creek resident Mary Lee Connery, who sadly passed away in November. As one of the joint owners of the Uki Butter Factory from the early 1980s, Mary Lee became the first manager of the Uki Buttery Bazaar Market, and we are happy to say that even today the Bazaar is run pretty much her way.

Mary Lee was instrumental in the sale of the Uki Butter Factory to the Uki Residents Association, pleased that the property could be in the hands of a like-minded group.

Vale Mary Lee



Vale
Mary Lee Connery

M-L to her friends, was born on the 17th of November 1941 in Rabaul PNG and she died on the 18th November 2023.



That she survived past 1942 is a story in itself. In the 44 years I have known M-L she was active in the community.

From the very beginning of the Uki Market, when it was called the Kungur bazaar to the redevelopment of the then derelict Buttery building. She was instrumental in the formation of the South Arm Historical Society.

She ran the Uki Markets for 20 years and was on the Hall committee for some time.

On the Multiple Occupancy where she lived she was secretary for more years than I can remember and, she was involved with the Murillumbah Regional Museum.

For those of us who could call her friend, her passing has left an empty space and a deal of sadness.

Rest in Peace M-L.

Gary Pick

I love working with our community to make a difference.

Please call for information and support.

GETTING THINGS DONE

Janelle Saffin MP

MEMBER FOR LISMORE

55 Carrington Street (PO BOX 52), Lismore NSW 2480

lismore@parliament.nsw.gov.au

02 6621 3624 | www.janellesaffin.com.au

[f janelle.saffin](https://www.facebook.com/janelle.saffin) [i janelle.saffin.mp](https://www.instagram.com/janelle.saffin.mp)

Authorised by Janelle Saffin MP. Funded using Parliamentary entitlements.



Relationship Health ... after the Referendum

Heather McClelland

In the Uki home booth we voted 'Yes' by a small margin, but we face a quandary: How deal with rage, falsity, blatant racism? How share in healthy debate and listen to dissent if tolerance and compassion are absent?

How be a healthy community?

One falsity difficult to disprove: 'The indigenous people themselves are against the Voice'. Proven contrary evidence? Close to 80% of indigenous voters in majority indigenous electorates voted 'Yes'.

After the Week of Silence Thomas Mayo wrote:

"The heart of the nation is still here. It always was and always will be, waiting to be recognised by our fellow Australians. Whether you voted 'Yes' or 'No' I say to you... the truth should be unifying, not divisive."

The invitation of the Uluru Statement from the Heart was simply a request that all of Australia walk alongside our first peoples allowing them a voice in the decision-making for their own communities.

Whatever the weaknesses of the 'Yes' campaign, the referendum could never have survived lack of bipartisanship.

The ruthlessness of an opposition leader unwilling to temper the most reckless and misleading lies and racism cemented the outcome.

Noongar author Claire G. Coleman writes:

"The progressive 'No' movement ...seemed to imagine a 'No' to the Voice was a 'Yes' to treaty or Indigenous Sovereignty"

This was never true. For the future she continued:

"Negotiation and campaigning are the most powerful tools we have. The mouse can never win electorally against the lion."

Noted by Thomas: Thomas Mayo, After the Vote The Saturday paper October 21-27, 2023 p.3

Claire G. Coleman No, nada, nothing The Saturday paper October 21-27, 2023 p.7



02 6679 7228 SOLAR
SUNBEAM SYSTEMS
★ Installations ★ Repairs & Supplies

Sunbeam Solar are a local business who have served the Tweed and Byron shires for the past 21 years. We are committed to providing clients with solar power systems that suit their needs, helping to significantly lower their energy costs or putting an end to their electricity bills

Government rebates are available for both types of solar, grid connect or stand alone systems. We offer competitive prices and installation of the highest quality. We have a track record of supporting our local clientele, providing back up service and warranties.

Sunbeam Solar have recently completed an upgrade to the solar system at the Mt Warning Preschool. We are preparing the new system for batteries so they will have backup power in case of emergencies, such as bushfires or floods.

For more information please contact:
sunbeamsolar@bigpond.com
(02) 6679 7228
Find us on Facebook

PEACE OF MIND
TERMITE & PEST MANAGEMENT
YOUR PEACE OF MIND IS OUR BUSINESS

Pest Control

Termites

Inspection

Termite Baiting Systems

Funnel Ants

1 MONTH AFTER TREATMENT

UNTREATED

100% PEACE OF MIND
SATISFACTION GUARANTEED

FUNNEL ANTS CAN BE CONTROLLED
12 MONTH GUARANTEE
Success rates of 2-4 years control from one treatment

ASK US HOW
07 5524 5550
www.pompestcontrol.com.au
We live in UKI

Strong Bonds Built during Friendship Visit

uki.refugee.project@gmail.com

Bryan McClelland



As always the refugee Friendship Weekend, October 12-22, enabled the creation of strong friendship bonds between locals and visitors. Volunteers who hosted families or individuals, or drove our 28 guests from four African nations, Papua New Guinea and Venezuela to and from Varsity Lakes station had leisurely opportunities to get to know newcomers to Australia. Two major events enabled broader interaction and the opportunity to have fun.

Old favourites, the Playing Possum Bush Band called and played for Saturday night dance.. It seemed that this year's group were even more willing than ever to give the strange moves a go. Food brought by Tweed Valley people quickly disappeared and towards the end of evening the visitors performed a New Guinea highlands dance, then allowed us all to join in. Locals mingled with the visitors.

Cudgen Creek in Kingscliff was again chosen for our Sunday picnic. Perfect weather enabled the full scope of water activity, for many a first under the watchful eye of

our volunteers and lifesavers from Cudgen Surf Club. One young 8 year old, tried every kayak, surf ski or board he could, while single Mums took the opportunity to move out deeper and take a break from their children.

Romero Centre in Brisbane who provide the connection to those who came said that the excited response from participants on return was stronger than ever before. Likewise the feedback from our volunteers here in Uki and the Tweed. Without doubt a key to the success from our point of view was the community involvement shared across so many people. A huge thankyou to all involved

It is significant to note that our sister organisation, spawned from the Uki Refugee Project, Tweed Welcomes Refugees are about to begin the process of settling their first family in the area. The purposes of the two projects complement one another beautifully - Both need our support.



Keep an eye out for Chinese Violet



Chinese violet (*Asystasia gangetica* Subsp. *Micrantha*) is an invasive perennial weed that grows in thick mats, smothering native vegetation in its path.

Our Biosecurity Officers at Rous County Council have managed to contain the spread of Chinese violet, working according to the current Control Order issued under section 62 of the Biosecurity Act 2015, with only one known cluster of plants in the Tweed Shire.

Early detection and eradication are important to prevent infestations. If Chinese violet became established in the Far

North Coast, it could potentially affect crops and natural ecosystems. Its success over a wide geographical range is due to its fast establishment, rapid growth rate, early flowering, and high seed production.

This plant can produce seeds as soon as 10 weeks after germinating. Small fragments of stems can take root at each node when they encounter moist soil. Most infestations in NSW started from dumped garden waste or garden escapees.

Listed as an eradication weed in the North Coast Regional Strategic Weed Management Plan, Chinese violet is present in the region and poses a biosecurity risk in NSW. For more information visit WeedWise <https://weeds.dpi.nsw.gov.au/Weeds/ChineseViolet>.

Seen it? Call Rous County Council (02) 6623 3800 or use our webform www.rous.nsw.gov.au/report-a-weed.



Image credits:
Rous County Council



little gallery

FEATURE WALL EXHIBITIONS

**“There is a crack in everything ...
That’s how the light gets in” ... Leonard Cohen**

This December and January we will continue the tradition of the shared feature wall with a uniting theme. This year we’ve decided to go with an inspiring quote by inimitable Leonard Cohen. This profound quote highlights the beauty of the broken in art, in ourselves and in our increasingly volatile world at a time when we need to focus on love and light to heal our individual and collective hearts.

Uki Under Lights: pre-Christmas shopping in Uki

Summer is upon us and Christmas is around the corner, which is why we’re very excited at Little Gallery to once again be part of Uki Under Lights on December 7.

We will join other loved local businesses for a fabulous night of food, music, art and late night shopping.

It’s a great opportunity to connect with community and support local artisans by buying unique, locally made gifts for your loved ones this Christmas.

Kick off your night with a picnic in the park, followed by the art market outside the Little Gallery at 5-7pm.

Head over to Uki Art Post at 6pm for the exquisite opening of amazing micro crochet artist Lisa Robertson (aka @funkybunny).

The following shops and artisans will be open for business on Thursday the 7th:

- * Little Gallery and artist pop ups
- * Uki Buttery shops
- *Tinkers Cuss
- * Illusive Wood
- * The Fair Trade



Uki 2024 Calendar

This calendar is dedicated to Ida Daly, Village Elder, and Chairperson of the Uki Community Technology Centre for two decades. Her guiding wisdom ensured its continuing ability to provide various services to the community and local businesses.

Proceeds from the sale of the Uki Calendar contribute to the running of the Uki CTC, a NFP volunteer organisation, located at the Buttery. The CTC provides internet access, quality printing, laminating, binding, technical assistance, graphic design, conversion of VHS, cassette, and vinyl, visitors and resilience information, administration of the Uki Village & District website and publication of the Uki News.

Follow in Ida’s footsteps, learn new skills, and become a volunteer at the Uki CTC.

Uki 2024 Calendar

2024 Uki Calendar
is now on sale at the
Uki Supermarket and
Uki Community Technology Centre.

A3 format available by ordering at
the Uki CTC.
Ph: 0266 795 399
E: etc.uki.nsw@gmail.com

C J Woodcock Plumbing

All plumbing
Rain water tanks
Maintenance
Roofing
Drainage
Hot Water
Bathroom Renovations

Lic No 198531c

Based in UKI—call Craig for 35 years experience.
Ph: 66795 405, Mobile 0428 795 405,
Email: cjwoodcockplumbing@gmail.com

PRUDIE’S PRISTINE CLEAN

ABN 803 743 396 11
Domestic Cleaning
Commercial Cleaning
Window Cleaning
Gutter Cleaning
Garden Maintenance

PER HOUR - PLEASE CALL - 0468 948 249

Louise Bally

To the Ecological Cost of Batteries

Everyone is aware that spent battery disposal is something that is a concern ecologically and that refuse tips have separate places to dispose of batteries, to ensure they do not go into general waste landfill. Studies have indicated that 100 million people across the world replace a dead battery every few minutes so this is not a small issue.

Most countries now have organised collection of dead batteries, incorporating some recycling of materials. With electric and hybrid cars on the rise, the use of batteries has increased at least in the automobile industry. Rechargeable devices also contain batteries, which have a longer shelf life, but ultimately these batteries also eventually end up in the trash.



Sustainable solutions and free energy is a controversial topic and while there are solar panels on an increasing number of homes and businesses, the reliance on battery powered devices, rechargeable or not, is both costly and a major ecological issue.

In 2022 a group of computer engineers from Northwestern's McCormick school of engineering and Deft University of Technology introduced the world's first free energy Game Boy, built on the Bfree system. The device harvests both solar energy and the user's kinetic energy

derived from button mashing, to power an unlimited lifetime of game play. Following on from this innovation, the BFree system was introduced, comprising of both energy harvesting hardware (the BFree shield) and an open source power failure resistant software based on a version of the programming language python. An active hobbyist community called the Maker Movement, is a group of DIY inventors. engineers and programmers, are now addressing the "battery problem" with the Bfree solution. The Bfree technology is invisible to the end user, enabling devices to run perpetually using intermittent energy.

Power interruptions cause the BFree system to pause calculations so that when the power returns, the device automatically resumes, without memory loss or needing to restart. This all occurs in the background, so the end user does not need to check the devices after power failure.

Our future generations could be envisaged developing basic computer programming skills as early as in primary education, enabling individuals and families to become self sufficient technologically. This could enable us to build and maintain our own electronic devices such as motion sensors for surveillance systems, displays, electronic doorbells and many more devices now encompassing the IoT (Internet of things) using the BFree system. A bright vision for the future.

More information about the Bfree system can be found on Github: <https://github.com/tudssl/bfree>

Speed of Light Computers

Photonic quantum computing is a branch of quantum computing that uses photons or particles of light as qubits. Photons have several advantages for quantum computing, such as low noise, high speed, long coherence times, and easy manipulation with optical components¹. Photonic quantum computing can also leverage existing technologies from classical photonics, such as lasers, waveguides, modulators, detectors, etc.

However, photonic quantum computing also faces some challenges, such as generating and measuring single photons reliably, creating strong photon-photon interactions, and scaling up the number and complexity of photonic qubits and circuits¹. Different approaches have been proposed and demonstrated to overcome these challenges, such as using linear optics with measurement-based feedback, integrating photonic devices on chip-scale platforms, exploiting atomic defects or quantum dots as sources of entangled photons, and using quantum teleportation to transfer quantum information between qubits.

The current state of photonic quantum computing technology is still in the early stages of development, but it has shown some remarkable achievements and potential applications. For example, in 2020, a Canadian company



called **Xanadu** announced the release of the world's first publicly available photonic quantum computing platform, which allows users to access 8-, 12-, and 24-qubit machines over the cloud. In 2021, a Chinese team reported the first demonstration of boson sampling with 76 photons, a task that is believed to be intractable for classical computers. Photonic quantum computing has also been applied to various domains, such as quantum communication, quantum simulation, quantum machine learning, quantum metrology, and quantum cryptography.

The future of photonic quantum computing technology will depend on the progress of both fundamental research and industrial innovation. There are still many open questions and challenges to be addressed, such as finding the optimal architecture and design for photonic quantum computers, developing reliable and scalable fabrication and integration methods for photonic devices and components, establishing standards and benchmarks for evaluating the performance and quality of photonic qubits and circuits, and exploring new applications and markets for photonic quantum technologies. There is also a need for more collaboration and coordination among different stakeholders, such as researchers, engineers, entrepreneurs, investors, regulators, educators, and users.

Integrated photonic quantum technologies | Nature Photonics. <https://www.nature.com/articles/s41566-019-0532-1>.

Uki Buttery Bazaar Entertainment

Sanne Grace Kenna

8am - 2pm

Uki Buttery Bazaar Market

To book a stall at the monthly Uki Buttery Bazaar please contact the Market Coordinator on 0487 329 150

PLENTY OF PARKING AT RAINBOW BRIDGE AND SWEETNAM PARK

DECEMBER Buttery Bazaar

Sunday 17th DECEMBER 2023



Trombone Kellie Gang

The straight talking, hip swinging, raw and raunchy jazz and blues of the Trombone Kellie Gang could get the tireddest feet moving. Fronted by the infamous Trombone Kellie, whose gutsy vocal delivery and roots blues trombone playing feature alongside some ripping slide guitar by Scrubby Pete. The engine room is simply brilliant with Robbie Renfrew on bass and Toby Baron on drums.

They have the perfect recipe for raucous street blues, jazz swing, gospel, soul, rockabilly & rock and roll. Made for the people and delivered with relish. Old School authentic, featuring exiting and fresh takes on Delta Swing and Country Blues styles. www.trombonekellie.com trombonekellie@gmail.com



JANUARY Buttery Bazaar

Sunday 21st JANUARY 2024



Henry Wilkinson & Kuwani Li duo

are brought to you from Brisbane. They play a range of styles including jazz, folk, and popular music, and capture their audience with enchanting vocal harmonies and intricate fingerstyle guitar.



Sky Eater

Is the dreamy lovechild of water spirit Chelsea Skyeater and dub soldier TK Bassdread. Chelsea's soaring vocals and TK's rootsy soundscapes create a contemporary fusion of dub, trip-hop and soulful pop that warms the heart.

Drawing inspiration from trailblazing acts like Björk, Portishead, and Morcheeba, Sky Eater incorporates technical innovation seamlessly into their live performances. Featuring a sophisticated and contemporary take on live looping and dub effects that brings an impressive technical edge to their performances.

With loopstations and the power of Ableton, they meld live instrumentation with polished electronic beats, samples, immersive effects and midi instruments that meld seamlessly with the live elements, redefining the boundaries of live and electronic music, making for a surprisingly rich and layered duo sound. Innovation in both music and live technique is the hallmark of a Sky Eater show.

Think reverb-soaked piano, dreamy vocal melodies, trip hop and reggae-infused beats with intuitive lyrics and sparkly jungle influences.

And when they feel like dialling things up a notch further, they add in a powerhouse, all-female horn and backing vocal section featuring MsEleneous on clarinet and sax, and Aya Trumpet on the trumpet.

Enter the magical realm of Sky Eater, where mermaids dance to the rhythm of the sea.



Jesse Morris

Is a roots and reggae troubadour, based on Bundjalung lands, with a swag-full of songs that were mostly written on the long roads, having spent the best part of a decade touring and travelling the local, national and international circuit. Often seen out the front of his six piece band (the Shakedown) or alongside his trio (Jesse Morris Band), this version of Jesse solo puts the song out the front, and gives listeners the opportunity to connect with the words and messages in a raw and stripped back format with an acoustic guitar and foot percussion. Songs that celebrate community, country & culture. Jesse will have copies of his latest record on vinyl and CD available side of stage. Check out [Facebook.com/jessemorrisband](https://www.facebook.com/jessemorrisband) or [instagram.com/jessemorrisband](https://www.instagram.com/jessemorrisband) for upcoming shows and more details.

**End of year get together
18th December from 3pm
Bring a plate to share**

Enrol for 2024
Monday to Friday 3-5 year olds
Monday Playgroup-
Bubs to big kids
9:30-11:30

(02) 66795313
mtwarningpreschool@gmail.com
www.mtwarningpreschool.com

Mt Warning Community Preschool

How the Law of Vibration Works

- Everything in the Universe has an electromagnetic field and an electromagnetic frequency. Including thoughts and feelings.

- Everything you feel, whether good or bad, determines the frequency you vibrate at, and you attract people, events, and circumstances that vibrate at the same frequency.

- If you change the frequency of your vibration on a given day by changing the way you feel, everything around you will change, because you will be vibrating at a new frequency.

- You can change something bad that happened in your life. It's never too late because you can change the way you feel about it.

- Many people put their feelings on autopilot. Their feelings are the reaction to what happens to them. However, they do not realize that their feelings are the cause of what is happening to them.

- To change something, whether it's your health, your money, your relationships, or any other aspect of your life, you have to change the way you feel about it.

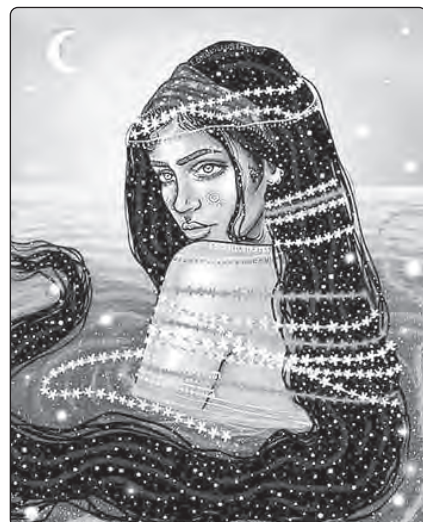
- Blaming, criticizing, pointing out faults, and complaining are all forms of negativity and all bring

nothing but conflict into your life.

- Remove from your vocabulary words such as terrible, horrible, unpleasant, hideous. Use more words like fantastic, wonderful, fabulous, brilliant and splendid.

- Even if you only have 51% good thoughts and feelings throughout the day, you are rebalancing your life.

- Every day is an opportunity for a new life. Every day you face a turning point in your life. And with just one day, you can change the future by changing the way you feel."



History of Uki Red Cross

Esma Thompson

Continued from Issue 132

Since World War 2, the Branch's funds and aid have gone to help victims of the many, man-made, and natural disasters such as famine, drought, floods, earthquakes, volcanoes, typhoons, and the many wars that have ravaged other countries plus aid given to the victims of Australian Cyclones.

In the early years a Red Cross Ball was held each year. Uki Red Cross catered for Miss Uki Ball from 1972 to 2013. A street stall and luncheon were held twice yearly from WW2 to 2019. The first Friday in June was the Winter Appeal, and the first Friday in December was the Christmas Appeal. Lunches served during December 1950 costing 4 shillings per person. The street stall held in 2011 listed items for sale as home cooking, produce, jams, pickles, craft work and bric-a-brac. The luncheon cost \$10.00 per person.

Raffles have always been a mainstay for fundraising and during the 1950's the main raffle was called a Sunday dinner, it consisted of a live chook, vegetables, and dessert.

Margaret Sweetnam taught Junior Red Cross at Uki School in the 1950's.

When no canteen existed at Uki School, pre-1950, Uki Red Cross catered for school lunches from the Uki Hall kitchen, until approximately 1972.

In October 1974 a concert was held in Uki Hall to celebrate 60 years of Red Cross in Australia, with another concert held two years later to raise funds. A few of the acts at the 1974 concert were: 1914 Beach Girl ballet, The Charleston Girls, Dad, Dave and Mabel Scene, Nursie Act and Hula Boys. The men who performed the Hula Boys practiced in secret above the Old General Store so they could surprise everyone on the night.

In 1989 members began knitting Trauma Teddies, which were distributed to Murwillumbah Ambulance Station, Murwillumbah Hospital and Murwillumbah Police Station. Uki School provided a classroom for the use of the blood bank every three months during the 1990's.



On numerous occasions when disaster has struck within the Uki Community, Uki Red Cross members have applied to head office for funds to assist those affected.

On the 30th of May 1990 a bus stop seat was donated to the Uki Community and placed in front of the Uki Butter Factory. A donation was also made to the Mount Warning Preschool to purchase a bubbler.

Members of the Uki Branch have participated in Red Cross Telecross.

When local farms had clearing out sales or auctions the Red Cross often undertook the catering. The Lange farm 7th December 2002 and the Ault farm in 2004.

In 2005 the Red Cross catered for a morning tea fundraiser held for the Boxing Day Tsunami Appeal at the Byangum property of Julie and Tony Hitchens.

Over the years many members have received Red Cross Badges, Bars, and Long Service Medals. The longest serving members of the Uki Red Cross Branch were Alma Milsom who was presented with the seventy year service medal in 1987, Ella Mitchell who joined in WW1 until 2002, Joy Armour who was a member for 69 years and Jean Scholes who was a member for 58 years.

2023 Joy Armour was acknowledged for her many years of service to Uki Red Cross with a seat situated beside the footpath near the Uki Community Gardens.



Julie Hitchens and Pauline Carrol of Uki Red Cross

UKI SAWMILL BUY DIRECT
TWEED VALLEY

UKI TIMBER YARD
Sawn & Dressed
Hardwood Timbers
Building Materials
Furniture
Landscaping
Fencing
Slabs

We Deliver

Email: uki.sawmill@westnet.com.au
www.ukisawmill.com.au

Phone: 6679 5116

Smiths Creek Road, Uki
After Hours 6679 5255

Open 7 Days for Lunch and Dinner
OFFER: \$12 Dinner Specials, Pizzas
Pool Comp Wed, Trivia Thurs,
Jackpot and Raffles Fri.

Email: info@mountwarning.com.au
Website: www.mountwarninghotel.com.au
Facebook: Mount Warning Hotel Uki
Instagram: [mountwarninghotel](https://www.instagram.com/mountwarninghotel)

1497 Kyogle Road,
UKI NSW, 2484

Hotel: (02) 6679 5111



FIRE ANTS in South Murwillumbah

Information from the NSW Minister for Agriculture

Fire ants have been discovered in South Murwillumbah.

The NSW Department of Primary Industries (DPI) have confirmed the detection of three red imported fire ant nests – with surveillance ongoing – in South Murwillumbah in north-eastern NSW, 13 kilometres south of the Queensland border.

This is the first fire ant detection in Northern NSW and presumed to be the most southern report of fire ants from the Queensland infestation.

The detection in NSW triggers the National Fire Ant Eradication Program response which is part of the \$600 million eradication plan developed by the Australian governments.

The NSW Government is working closely with the Commonwealth and the Queensland Governments, plus Tweed Shire Council. Experienced teams are on site chemically eradicating the infestation across a radius of 200 metres from the found sites.

Following detection of the fire ants the National Plan releases four subsequent actions – eradication, control, tracing and communications.

NSW DPI are leading the control, tracing, and communications by implementing an emergency biosecurity order across a radius of five kilometres from the site in South Murwillumbah.

All businesses and residents within that radius are restricted in how they can move potential fire ant carrier materials without permission. The following types of materials are restricted: mulch, woodchips, compost, sand, gravel, soil, hay and other baled products.

NSW DPI Officers and detection dogs are working on determining the extent of the infestation, undertaking genetic testing of the fire ants, and searching all properties within the control radius.

To date, NSW DPI fire ant preparedness activities have involved stakeholder engagement and training to 67,000 industry and community stakeholders in the northern border zone of NSW, through face-to-face engagements, electronic direct mail and letterbox drops.

Ten cent coin
for scale



What Do Fire Ants Look Like?

Fire ants are dark reddish-brown with a darker black-brown abdomen and range in size from two to six millimetres long. Their ant nests are distinctive mounds of loose, crumbly or fluffy looking soil with a honeycomb appearance, up to 40 centimetres high, with no obvious entrance holes.

See here for pictures:

<https://www.fireants.org.au/look/appearance>

More Fire Ant Information

Red imported fire ants can damage electrical and agricultural equipment, sting people, pets and livestock, kill native plants and animals, and damage ecosystems beyond repair.

Those who breach the emergency biosecurity order could face significant penalties with fines for breaches reaching up to \$1.1 million for an individual and up to \$2.2 million for a corporation.

For more information about red imported fire ants, visit the NSW DPI website:

<https://www.dpi.nsw.gov.au/biosecurity/insect-pests/fire-ants>

Reporting Fire Ants

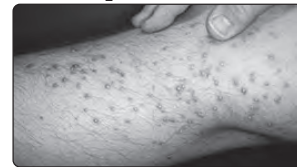
Residents and businesses in northern NSW should report any sign of fire ants to:

NSW DPI – **1800 680 244** or

www.dpi.nsw.gov.au/biosecurity/forms/report-exotic-ants



Fire ant colony floating on floodwaters in Texas



Fire Ant bites forming welts

Home Remedies for Ant Bites

Some tried-and-true home remedies that can provide relief for ant bites include the following:

Apply a cold compress or ice wrapped in a cloth to the affected area. It helps reduce swelling, numb the area, and alleviate itching.

Apply fresh aloe vera gel directly to the ant bite. Aloe vera has soothing and anti-inflammatory properties that can help relieve itching and promote healing.

Mix a small amount of baking soda with water to create a paste. Apply the paste to the ant bite and let it sit for several minutes before rinsing. Baking soda can help reduce itching and inflammation.

Dab a cotton ball soaked in vinegar (such as apple cider vinegar or white vinegar) onto the ant bite. Vinegar has acidic properties that may help relieve itching and reduce the risk of infection. Dilute a few drops of tea tree oil with carrier oil (such as coconut oil) and apply it to the ant bite. Tea tree oil has antimicrobial and anti-inflammatory properties that can help soothe the bite and prevent infection.

Remember, these home remedies are generally safe for mild ant bites. However, if you experience severe symptoms, signs of infection, or known allergic reactions, it's important to seek medical attention.



We meet every Tuesday from 10 - 12.30 at Uki Park.
New voices Welcome

Original meaning of a deck of playing cards:

- 52 cards for 52 weeks in the year.
- 2 colors for day and night
- 4 suits for the 4 seasons and 13 weeks per season.
- Twelve court cards representing the 12 months.

If we add each of the cards (ace + ace + ace + ace + two + two + three + seven + eight ... and etc) of the game we will get 364.

The card game is an agricultural calendar that told us about the weeks and the seasons.

With each new season, it was King's week, followed by Queen's week, Jack's and so on until AS week changed seasons and we started over with a new color.

Jokers were used in leap years.



NSW RURAL FIRE SERVICE

FAR NORTH COAST
 (Ballina, Byron and Tweed Shires)

24 HOURS BEFORE YOU LIGHT ANY FIRE, YOU MUST CALL THE
BURN NOTIFICATION LINE

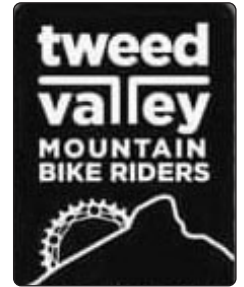
1300 632 174

Notify us of your planned burn

If you are planning to burn on your property, you need to let us know before you light up.

Notifying us of your planned burn can help reduce unnecessary emergency calls. You also need to let your neighbours know at least one day ahead

From page 1



Why does Council close the Uki Mountain Bike Park when we receive rain?

The soils in our area are clay-based. This soil, which makes up most of our trails, does not hold up to wet-weather use like sandy soils do in other areas.

When trails are wet, our trail surfaces are susceptible to ruts, compaction and other damage caused by bikes. We'd like our community to work with us and not enter the park or use the trails during and just after rain. Let the trails dry out!

Trails impacted by those who use them during wet weather will require more maintenance and this means the park will be closed while repairs are completed. Let's work together to ensure this awesome FREE recreational facility remains open for all to use and stay off the trails when they're wet!

Stay up to date with what's on at the park by joining the Uki Mountain Bike Community Facebook page

<https://brnw.ch/21wE6MU>

and find out more about the park on our website

<https://brnw.ch/21wE6MT>

TWEED VALLEY Denture Clinic

- Full Dentures
- Relines
- Full Dentures over
- Repairs
- Implants
- Mouthguards
- Partial Dentures

Ian Kingston - Dental Prosthetist
 131 Main Street, Murwillumbah,
 Phone 6672 4618
 (next to the Imperial Hotel, Wheelchair Access)

UKIRA

UKI Village and District Residents Association Inc
 Public Meetings

UKIRA meets on the first Tuesday of every second month at 7 pm in the Meeting/Supper Room at the UKI Hall. Entry is through the back door off the back verandah. Meetings are held in February, April, June, August, October and December.

UKIRA PO Box 3141, Uki, NSW 2484
ukiresidentsassociation@gmail.com

Astrology

Paola Emma

Welcome to my December 2023 and January 2024 Astrology Insights

Pluto, Eris, Eclipses, Uranus and the Lunar Nodes: War and the fear of War

The recent eclipses have had and are still having a powerful impact on the collective psyche via intensely confronting events, man-made and natural disasters of great magnitude.

Pluto, planet of transformation and life-altering crisis, and Eris, planet of discord, have been aligned to the eclipses' degrees, not just in October, but from earlier this year, in April and May too. Pluto will continue its right angle to Eris and the Lunar Nodes (indicators of recent eclipses), until its ingress into Aquarius on January 21 2024. And the Lunar South Node will be conjunct Eris, at least to this year's end. The Nodes of the Moon represent the course upon which destiny flows, from the past to the future, individually through the birth horoscope and collectively, through the horoscopes of nations. In plain English this configuration is manifesting in many adversities, at the same time urging realizations of what is needed to avert future ones.

The Israel/Hamas war is a great case in point, due to the current configuration's alignment to both the Israeli and Palestinian birth charts (May 14-4pm-1948-Tel Aviv: establishment of the State of Israel. November-15-0.40am-1988-Algiers: Palestine's Declaration of Independence). The study of these horoscopes is a fascinating/tragic proof of astrology at work.

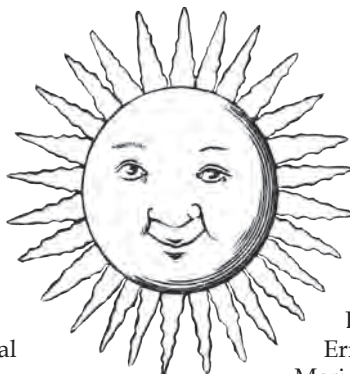
Transiting Pluto has been conjunct Israel's home sector since 2019 (serious trouble at home) and Eris has been entering the sector of Open Enemies, very slowly, since 2014, but it is now right on top of it. Also particularly significant right now is the fact that the transiting Lunar Nodes straddle Israel chart, from east to west, South Node rising conjunct the Ascendant and North Node setting conjunct the Descendant), showing how important this period is for defining this nation's self-image and global relationships. \The South Node on the Ascendant affect the public persona of the nation in a negative way, bringing to focus unresolved issues.

While the North Node in the area of open enemies is shining a more positive light on Israel's adversaries, the future seemingly more aligned to their cause. The transits seem to indicate that, despite the horrific crimes perpetrated by Hamas on October 7, public opinion around the world is shifting in favour of the Palestinian cause, after the unrelenting Israeli response that has impacted the civilian population more than the terrorists, not only in Gaza but also in the occupied West Bank. These transits' influence is not limited to this war and others but to the general unsettled character of this historical transition period.

Just before Hamas' attack (October 2-5), Mars, god of war and violence, crossed the Israeli Ascendant, becoming conjunct the Lunar South Node and opposed to Eris, the dwarf planet of discord and strife. All these positions are at right angle to Israel's Meridian, affecting both its public image and domestic affairs.

Pluto, still very close to Israel's Lower Meridian, also shows that this nation's more profound transformation will have to come from within. The transit of Pluto in the home sector will last until 2042, plenty of time for in-depth self-reflection!

Transiting Uranus, planet whose function is to upset the status quo, is this year hovering on Israel's Birth Sun, the nation's core of identity (in Taurus and the Eighth House), seriously shaking



the power grip this country has held in the region since 1948. This one-in-84-years transit became active in August this year and will remain active until early 2025, very significant indeed.

Looking at Israel's Progressed Horoscope I noticed Eris very closely conjunct the progressed Lower Meridian, confirming the potential for long lasting strife from within, and Mars, planet of war and antagonism, most elevated and powerful this year, in conjunction to the progressed Mid-Heaven. This aggressive conjunction could last a couple of years, not great news for peace.

In Palestine's birth horoscope grim, authoritarian Saturn is setting on the cusp of the open enemies sector. This placement shows that Palestine's counterpart is in control of the situation, its power sanctioned by authorities, a weighty enemy. At the same time transiting Pluto is conjunct Palestine's Moon on the fated last degree of Capricorn. In the chart of a nation afflictions to the Moon from Pluto sometimes manifests as excess deaths among civilian population, destruction and separation of families and communities; all together a very challenging emotional time, one that will foment more resentment. This transit will remain active until the proper ingress of Pluto into Aquarius, in November 2024. Of great significance also is Uranus, planet of reforms/revolution, ready to cross the Palestinian Mid-Heaven. Significantly Uranus became stationary on this point just before Hamas' crazy attack on its neighbour. Uranus will return there for good, together with Jupiter, at the end of April 2024, hopefully a positive turning point for this oppressed people, one that could change their standing in the eye of the world.

The Palestinian progressed horoscope seems to also confirm a powerful shift in the near future, with the progressed Sun, the nation's identity, moving from Sagittarius to Capricorn in July 2025 and aligning with Uranus between July this year and July 2026.

Last retrogradation of Mercury, Capricorn-Sagittarius, December 13 to January 2 When a retro period occurs between Earth and Fire Signs the natural flow of things seems to be reversed: we thought we were ready to put our visions into practice, to make our aspirations into reality, instead we are forced to go back to the drawing board.

Situations we find ourselves into and our own state of mind demand further revisions of our plans. This is often a frustrating but necessary setback, actually contributing to ultimate success, just taking more time and patience.

For astrological insights visit my site: [Living Moon Astrology](#)





We Just Turned 3!
HAPPY BIRTHDAY TO US!

Northern Rivers Property Group, co-founded by Adrianna and Paul, boasts 27 years of combined real estate expertise, gained through successful roles in various agencies. Our boundless enthusiasm for creative marketing and exceeding customer expectations drives our brand. We focus on showcasing our clients' properties in the best light, keeping up with the latest in digital marketing, and understanding modern consumer real estate trends.

A heartfelt Thank You to our past clients and customers for making the last 3 years not only successful but also lots of fun! We eagerly anticipate welcoming new clients during the upcoming festive season and into 2024.



CHECK OUT THESE "STOCKING FILLERS"



www.northernriverspropertygroup.com.au

📍 Suite 2A Warina Walk Arcade,
114 Murwillumbah St, MURWILLUMBAH

📱 @paulstobbieatreatly
@AdriannaNRPG

