



Edith Streiner

Bushfire prone land map updated

94% of Tweed Shire is Bushfire Prone

Find out what it means for your property and be prepared for bushfires



Tweed Shire Council and the NSW Rural Fire Service (RFS) have updated mapping of bushfire prone land across the Tweed Shire area.

The 2023 mapping is an update of the former 2012 mapped areas.

Every Council in NSW is required by legislation to map bushfire prone land according to conditions set by the RFS in its Guide for Bush Fire Prone Land Mapping.

The latest Tweed Shire mapping has been developed based on NSW RFS guidelines and is the culmination of input from Council's bushfire, GIS and ecology technical staff, as well as external expert advice.

Of note is the introduction of Vegetation Category 3, considered medium bushfire risk, which includes grassland and pastures as bushfire prone vegetation types. The new vegetation category has been introduced to reflect the bushfire risk presented by grasslands and includes areas of unmanaged grassland (cattle grazing), cane land, cleared and unmanaged banana plantations, and melaleuca tea tree.

The 2023 map, reviewed and certified by the NSW RFS Commissioner on 24 May 2023, is used as a trigger to ensure new developments have adequate protection from bushfire.

Depending on the level of risk, mitigation measures may need to be incorporated into development, ranging from things like metal flyscreens and gutter guards, to modifying the style, construction material or location of a building.

Council's Planning Director Vince Connell said land which was mapped as bushfire prone did not prevent

development from happening, and existing buildings would not require retrospective modifications simply because they were now mapped.

"The new mapping will only affect you if you are planning a new development on your property, such as building, renovating or starting a home-based business. It is, however, a timely reminder for all property owners to ensure they have a bush fire survival plan," Mr Connell said.

The new mapping took immediate effect from the certification date of 24 May 2023, and Council's Development Assessment and Building Units will be working with the applicants of existing development and modification applications to ensure these new bushfire prone land planning controls are appropriately addressed.

Most land in Tweed Shire is considered bushfire prone, with only the more urbanised areas along the Tweed Coast, Tweed Heads and larger centres not considered at risk.

Continued on page 13

Fire Ants at the Border

Tweed Shire Council is working alongside the NSW Department of Primary Industries (DPI) to alert locals to be on the lookout for red imported fire ants, following detections of the invasive ants at Mermaid Waters, just 11.5 km north of the Queensland border. The NSW Government, which is leading the charge against the invasive pest, announced last week it would spend an additional \$80 million to protect the State from the insect.

Continued on page 6

From the Editors

Welcome to the 131st edition of the Uki News

After such an extremely dry first half of the year has left creek levels already as low as is more usual for October, the prospect of El Nino driving another 6 - 9 months of dry conditions is a warning to prepare for a potentially harsh bushfire summer. Make a bushfire survival plan, reduce fuel around your home and trim

your driveway so a large fire truck can easily clear all vegetation, so at least 3 metres wide and 4 metres high measured at the edges.

The rapidly falling water table will likely bring a sharp focus on water resources management where every litre matters.

Around the village, a number of iconic trees are being assessed by

professional arborists for appropriate remedies.

Volunteers are quietly undergoing training and making preparations for future climate challenges and emergencies.

We thank all these caring people who take on some of the most confronting challenges for the benefit of the whole community.



Contact Uki News: theukinews@hotmail.com

ADVERTISING

Business card size	\$30	Half page	\$100	All Advertisers will receive an invoice Advertising revenue helps fund the Uki News
Quarter page	\$60	Full page	\$200	

Disclaimer: The opinions and views expressed in this newsletter are not necessarily those of the Uki News nor of UKIRA.

Uki News is printed by Uki Community Technology Centre (aka CTC) at the Buttery building.
Current and past issues are available at Uki Village website – www.ukivillage.com.au/uki-news
The Uki News is a free, bimonthly publication by the Uki Residents Association (UKIRA).
It is delivered to most households on the South Arm of the Tweed River.
Copies are also available at various local outlets, including the Uki Supermarket.

Memorial

We are so sad to share the news that Paul Lucas died suddenly but peacefully at his home on the 30.6.23.

Paul was a long-time local of the Mt Burrell, Byrrill Creek and Uki areas, moving from his birthplace, Sydney to the Tweed Valley in the early 80's after hearing stories of his mother's upbringing in Bilambil.

Though a sometimes-difficult character, Paul did have a wicked sense of humour, a quick wit and loved a regular game of chess with mates in the park in Uki.

Paul is survived by his daughters Adele and Jasmine and his grandson, Mars whom he loved so much.

A memorial is being held at the **Mt Burrell Community Centre on Saturday the 5th of August at 10.30am**, followed by a beer at the Mt Warning Hotel at 2.30pm – invitations are extended to his friends in the area, bring a story.



Paul Lucas
10th January 1956 - 30th June 2023

Smallbizfit.com.au

Tailored business systems saving you time & money

Geoffrey Colwill
0427 701 892
geoffrey@smallbizfit.com.au

MYOB
Certified Consultant

UKI AUTOMOTIVE

ACN 638 213 171

Brendon Veares
Matt Clark
DIRECTORS

Ph: (02) 6679 5225 A/Hrs: 0468 937 090

1504 Kyogle Rd, Uki, NSW 2484

UKIRA Village Notes



Buttery Camphor Laurel Tree Update

The four Camphor Laurel trees along Kyogle Road are in the process of being trimmed according to Tweed Shire Council guidelines. Council's Biodiversity, Sustainability and Environment officer reviewed the four trees and UKIRA employed a level-5 arborist to assess the trees' health and make recommendations for their future, as per council recommendations.

The Uki public has long been interested in the four old and large Camphor Laurel trees, with concerns of dropping limbs along walkways at the bus stop, maintaining summer shade and animal habitat, as well as their historic presence.



Council have approved the arborist's suggestions and the two outer trees will be canopy trimmed 20%. The two inner trees will be canopy trimmed 50% with a focus to provide animal habitat in the remaining trunk and branches. UKIRA will be undertaking these recommendations in the near future. Any comments to

ukiresidentsassociation@gmail.com



Tawney Trio
at Chowan Creek

Photo by
Karen Cox



UKI Village and District Residents Association Inc Public Meetings

UKIRA meets on the first Tuesday of every second month at 7 pm in the Meeting/Supper Room at the UKI Hall. Entry is through the back door off the back verandah. Meetings are held in February, April, June, August, October and December.

UKIRA PO Box 3141, Uki, NSW 2484
ukiresidentsassociation@gmail.com



**all pies and cakes are made
on the premises**

**Open six days Monday to Saturday
from 7 to 3**

Located at the rear of the Buttery

Phone orders welcome

Great coffee

School lunches delivered to the school

ph 0407 198 707



**UKI
GINGER
CO**

**Premium products made from ginger
grown and harvested in
Uki and the Tweed Valley**

Gluten Free - Vegan

Available at the Uki Supermarket



UKI ELECTRICAL SERVICES

Domestic & commercial installation & repairs
rewiring, meter board upgrades,
safety switches, smoke alarms, security systems,
telephone and data cabling

Level 2 accredited electrician
metering, service lines, connections

Quality workmanship guaranteed

phone George for friendly service & honest advice

ph: 66795915 fax: 66795910 mob: 0411 185 811

10 Church Hill Uki NSW

george.arronis@bigpond.com

Resilient RUKI's Neighbourhoods Project

Get Prepared

A Golden Opportunity for building Neighbourhood Resilience.

Jack Frost from SES is working together with RUKI's The Neighbourhoods Project, to help prepare our region for future floods and storms.

During the neighbourhood gatherings held earlier this year, helping people to be more prepared for future natural disasters was identified as a priority in building the confidence and capacity of our neighbourhoods.

Since then, each neighbourhood has been divided into 'pods' of 10 - 15 households. Each pod has a pod leader to support making the connections within and strengthening the capacity of their pod.

With support from project coordinator, Marlena Basser, Jack Frost will run the pod leaders through the process of developing a flood & storm plan for their own household while at the same time offering tips and tricks for guiding others through the same process.

Then with the help of a kit, the pod leaders will host a kitchen table or back verandah 'Get Prepared' session for the neighbours in their pod.

Not only will everyone walk away with a Flood & Storm Plan for their household/ property, they are also likely to build stronger connections with their neighbours, share local knowledge and wisdom, and continue developing ideas for supporting each other in the face of future floods and storms.

The training will be held on Sunday, August 13th, 2pm - 5pm at Uki Hall. If you are interested, whether you are a pod leader or would simply like to be involved RSVP by email to marlena.basser@gmail.com or text to 0404486712

For information about your local pod 'Get Prepared' sessions, keep an eye out for an invitation in your letterboxes later in August.



RUKI is seeking 300 people living in the Uki district from Mount Burrell to Mt Warning Rd to complete a short survey that tells us how you were doing after the floods.

We will then ask you to complete a similar survey towards the end of the year, once The Neighbourhoods Project is complete.

It will help us to measure the impact of the project in 3 areas...

1. Neighbourhood connection
2. Wellbeing and resilience
3. Skills and capacity

You are not being asked to identify yourself and so your responses will be anonymous and confidential. We are not measuring individual's changes but rather trends across the population.

SO, ARE YOU 1 of the UKI 300?
Go to www.resilientuki.org/survey and complete the survey or use the QR code

For more information, contact Marlena Basser on 0404486712



Brought to you by RUKI's Neighbourhoods Project


HEALTHY NORTH COAST **phn** The Neighbourhoods Project is funded by Healthy North Coast through the North Coast PHN program.

The Neighbourhoods Project presents

'Get Prepared'

FOR FLOODS AND STORMS

A training for neighbourhood and pod leaders



Helping people to be more prepared for floods & storms was identified as a priority in building the confidence and capacity of our neighbourhoods in the face of future disasters.

Jack Frost from the SES will run the pod leaders through the process of developing a flood & storm plan for their own household while at the same time offering tips and tricks for guiding others through the same process.

Then with the help of a kit, the pod leaders will host a 'Get Prepared' session for the neighbours in their pod.

Not only will your neighbours walk away with a Flood & Storm Plan for their household, they are also likely to build stronger connections with their neighbours, share local knowledge and wisdom, and continue developing ideas for supporting each other in the face of future floods and storms.

IT'S A WINNER FOR EVERYONE INVOLVED!!!

SES
NSW STATE EMERGENCY SERVICE

JOIN US for the POD LEADER training...

Date: Sunday, August 13th, 2023

Time: 2pm - 5pm

Venue: The Uki Hall

RSVP to marlena.basser@gmail.com

Please write Get Prepared in the subject line

Tea, coffee and biscuits will be provided.

HEALTHY NORTH COAST **phn** NORTH COAST
This project is funded by Healthy North Coast through the North Coast PHN program.

CTC @ Uki

Community Technology Centre

The Buttery
1454 Kyogle Rd Uki
P.O. Box 3404 Uki NSW
ctc.uki.nsw@gmail.com
Ph/Fax: (02) 6679 5399
ABN: 89 292 130 424

- @ Print Shop
- @ IT Assistance & Tuition
- @ Internet, Adobe Suite
- @ Office Services
- @ Web Design
- @ VHS to DVD
- @ Membership Available

Watching for Weeds

Tess King Weed Biosecurity Project Officer ROUS COUNTY COUNCIL
www.rous.nsw.gov.au/weedresources email weeds@rous.nsw.gov.au Phone 0266 233 800



Update on the battle against Cecropia on the Far North Coast

A good news story! The Rous County Council Weed Biosecurity team have been working tirelessly over the last several years to eradicate the Cecropia weed tree (Cecropia spp.) from the Northern Rivers, before it caused irreversible damage to our local delicate ecosystems. This has been a program of diligent identification, mapping and control works of over a hundred specimens. We are pleased to announce that our team are currently tackling the few remaining trees now, meaning we have reached our goal, of no known established Cecropia left on the Far North Coast. What a win!



Cecropia, also known as Mexican Bean Tree is a fast growing, ornamental tree native to tropical Central America and the West Indies, with the potential to invade our local rainforests and riparian areas. Cecropia thrives in wetter habitats and will form dense colonies in forest gaps and margins, roadsides and gullies. Each tree produces up to 20,000 seed per year which can be spread by fruit bats, birds, flowing water and the movement of soil. Once established, these monocultures would be devastating to native species of flora and fauna.

Cecropia is a regional priority eradication weed under the NSW Biosecurity Act 2015. For further information go to WeedWise www.weeds.dpi.nsw.gov.au/Weeds/Cecropia or to report suspected sightings head to www.rous.nsw.gov.au/report-a-weed

NOTICE

Our customer service desk is no longer open to the public on Fridays. Our team will still be available though and can be reached via phone on 02 6623 3800, email at council@rous.nsw.gov.au, and our website at rous.nsw.gov.au/contact-us. Customers wishing to pay their water accounts can do so online via BPay or in person at the Post Office.

Janelle Saffin MP
MEMBER FOR LISMORE



GETTING THINGS DONE

**MOBILE OFFICES
RETURNING IN 2023**



Thank you for your support

*I will continue to fight for the regions and
deliver on my election commitments
We will be back soon doing mobile offices in Murwillumbah
and surrounding villages
JP Services will be available
Dates to be advertised
I look forward to seeing you there*

VISIT, WRITE OR CALL OUR OFFICE
We have temporarily moved to;
12-14 Carrington Street, Lismore NSW 2480
PO Box 52, Lismore NSW 2480
026621 3624
lismore@parliament.nsw.gov.au

FIRE ANT ALERT

Continued from page 1

First detected at the Port of Brisbane in 2001, red imported fire ants have recently been detected at Mermaid Waters in Queensland, just 11.5 km north of the border. This followed the discovery of other nests at Mudgeeraba, Carrara, Worongary and Innisplain, all within 18 km of NSW.

A comprehensive awareness campaign is underway by the NSW DPI, with DPI representatives holding meetings with Tweed Shire Council's field-based staff and Councillors in recent weeks, and a mailout to all Tweed households expected to be issued soon.

NSW DPI Invasive Species Biosecurity director Scott Charlton said fire ants cause serious social, economic and environmental harm and it was important to keep NSW and the Tweed free from the aggressive pest.

"Local residents and businesses should check their properties and if you see any sign of fire ants, please call NSW DPI on 1800 680 244 - finding them early and alerting us will increase the chances of successful eradication," Mr Charlton said.

Tweed Shire Council Pest Management Supervisor Brian Falkner said the pest management team is preparing to tackle this invasive pest.

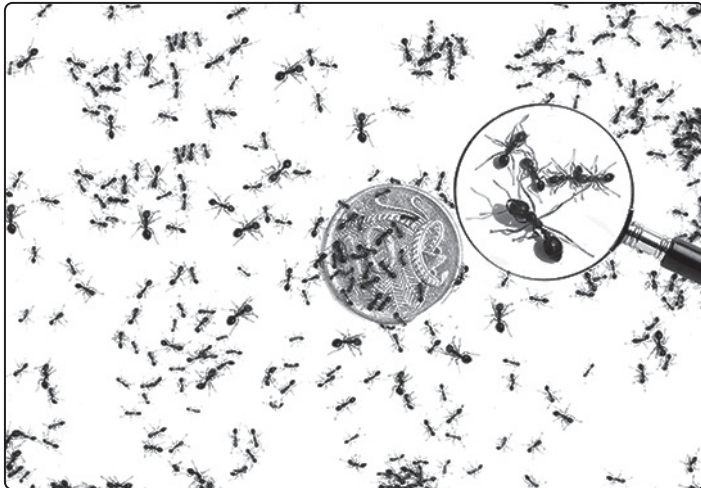
"Working closely with NSW DPI and Queensland authorities, we are running fire ant surveillance programs and preparing to respond if fire ants are found here," Mr Falkner said.

"Educational support and training workshops are being provided to all field-based staff, so they know what to look out for on the ground.

"Local developers, builders, road crews and the agricultural industry should also be on alert. We cannot allow fire ants to take hold in the Tweed. We need your help to look out for this invasive species to help keep our community safe."

Residents and businesses are urged to check their properties for any evidence of fire ants.

Fire ants can look similar to other ants but their nests are distinctive with mounds of loose, crumbly or fluffy looking soil with a honeycomb appearance, up to 40 centimetres high, with no obvious entrance holes.



Fire ants are dark reddish-brown with a darker black-brown abdomen and are from two to six millimetres long.

Image by NSW Department of Primary Industries



They are very aggressive and will swarm out of the nest if gently poked with a stick. If people are stung, the multiple stings fire ants inflict form white pustules within 48 hours. Look for them in sunny open areas, including lawns, parks, school grounds, sports fields, golf courses, gardens, foreshores, paddocks, disturbed soil and roadsides.

Fire ants may be found in areas where hay, turf, mulch, soil, potted plants, sand, gravel, or agricultural machinery have been used or stored, especially goods from southeast Queensland.

They can spread up to 5 km by flying and can be moved in nesting material, which includes mulch, woodchips, compost, sand, gravel, soil, hay, other baled products, and even pot plants.

Anyone bringing these goods into NSW from Queensland should check if they came from areas within 5 km of a known fire ant infestation. Such goods are subject to strict entry conditions and must be accompanied by a certificate. If you buy or bring these materials from Mermaid Waters, Mudgeeraba, Carrara, Worongary, Innisplain or the red imported fire ant biosecurity zone in southeast Queensland, you should check your requirements online at red imported fire ants

www.dpi.nsw.gov.au/biosecurity/insect-pests/fire-ants

Anyone who finds signs of fire ants on their properties is urged to call the NSW DPI on **1800 680 244**.



- 
Pest Control
- 
Termites
- 
Inspection
- 
Termite Baiting Systems
- 
Funnel Ants

PEACE OF MIND
TERMITE & PEST MANAGEMENT
YOUR PEACE OF MIND IS OUR BUSINESS

1 MONTH AFTER TREATMENT



UNTREATED

100% PEACE OF MIND SATISFACTION GUARANTEED

FUNNEL ANTS CAN BE CONTROLLED
12 MONTH GUARANTEE
Success rates of 2-4 years control from one treatment

ASK US HOW
07 5524 5550
www.pompestcontrol.com.au
We live in UKI

10 Years too Long - Refugees in Limbo

Bryan McClelland

URP - Uki Refugee Project is ten years old!



More than 1100 people in Australia and 80 in PNG remain in limbo, languishing without a future.

In our tenth year, URP has joined the national call, ten years since the Rudd announcement, to end the cruelty for these people, who seek safety and acceptance. After years on Manus, one man speaks of his detention in Brisbane's Kangaroo Point Central Hotel.

"We had been in despair, in detention so long. We decided to protest, ask people to notice us. We hid black plastic garbage bags and took paper from the activity class. One guard gave us sticky tape. We worked on banners after last head count at night and hid them during searches.

Before, I'd lost hope when rejected for a US program. I collected tablets to hurt myself but guards found them. But now, putting banners on the balcony people saw us, supported us, we realised we are not alone. I'd thought Australians were racist, against refugees. I changed my mind about them 100%. It was hard to keep hopeful. After months of protests they took our banners, we were locked out of the balconies.

In March 2021 I got out, still scared. I couldn't trust even smiling people thinking it was a trap. I am still without a future.

I hope I can stay here and start my life again."

In 2013 a small group gathered in Uki asking a question, 'What can one small village do?' in response to the Government's inhumane refugee policy.

On 19th July, 2013 Kevin Rudd announced the 'offshore processing' policy. Anyone arriving by boat would 'never be allowed to settle in Australia'. Thousands of men, women and children have lost years of their lives in



appalling conditions on Nauru and Manus Island.



URP engages in advocacy, fund-raising and making friends with refugees. Our next Friendship Visit is planned for 21-22 October this year. Your involvement is welcomed.

Contact info@ukirefugeeproject.org



Spotted Pardalote

Mid winter activity collecting cobwebs from window glass to insulate its nest. Builds tiny tunnels in to earth banks to nest.

At Byrrill Creek, 2023

Photo by Jai Morrison

TWEED VALLEY Denture Clinic

- Full Dentures
- Relines
- Full Dentures over Implants
- Repairs
- Partial Dentures
- Mouthguards

Ian Kingston - Dental Prosthetist
 131 Main Street, Murwillumbah,
 Phone 6672 4618
 (next to the Imperial Hotel, Wheelchair Access)

'Helping is not always helpful'

Heather McClelland

RELATIONSHIP HEALTH



"We seek constitutional reforms to empower our people to take our rightful place in our own country"

Statement from the Heart.

The existing constitution exercises power over our Indigenous people, 'to help' them! History shows us how, as the frontier wars came to an end, the inhabitants and carers of country were herded into missions and reserves on the fringes of white society. Assimilation became the policy and: *"Snatched from our mothers breast Said this was for the best Took us away"*.

- Archie Roach, 'Took the children away'

On August 11th 2000, Justice O'Loughlin responded in the Cubillo vs Commonwealth legal case FCA1084:

"I have great sympathy for Mrs Cubillo, for Mr Gunner [two members of the stolen generation] and for others like them who suffered so severely as a result of the actions of many men and women who thought of themselves as well-meaning and well-intentioned but who today would be

characterised by many as badly misguided politicians and bureaucrats. Those people thought they were acting in the best interest of the child. Subsequent events have shown they were wrong."

More recently Professor Michael Dodson objected when Premier Colin Barnett threatened to compulsorily acquire land justifying it as 'an opportunity to help those people' with their 'high rates of unemployment, poor education, poor health standards, domestic violence, abuse and neglect of children.'

Dodson said:

"Compulsory acquisition cuts across people's power to make decisions in their own best interest... Wait Mr Premier, where is the evidence around Australia that that is what will happen with your compulsory use of this land, because invariably it doesn't turn out that way?"

<http://mobile.abc.net.au/news/2010-09-02/gas-hub-land-to-be-compulsorily-acquired/2245784>.

Tracker Tilmouth said:

"We will always get blamed for it. They say... 'We'll dictate the policy and what you should be doing. If you don't do it then it's your fault, not ours. We've been trying to help you'."

There is a stark difference between 'helping', and giving over some power because justice requires it.

El Niño still at alert level

Long-range weather forecaster Don White expects the Bureau of Meteorology will declare an El Niño "in a matter of weeks".

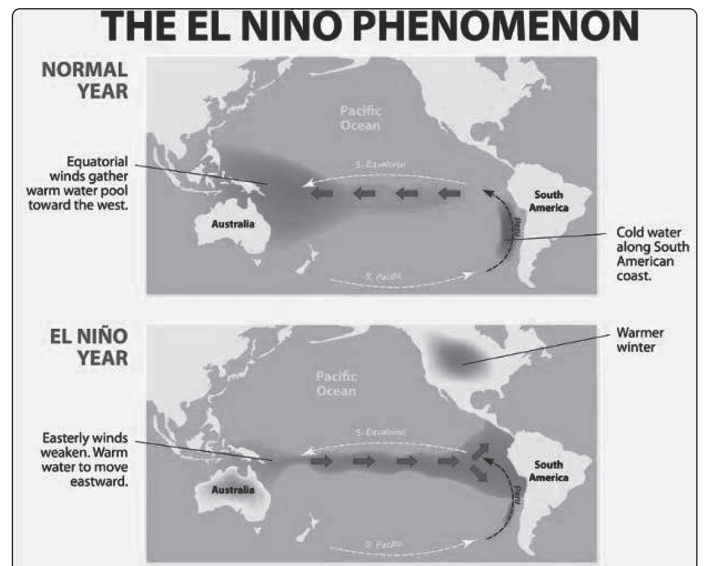
"It's likely to reach its peak in August and spring," he said. **"In past events, El Niños last at reasonable strength for six to nine months – so that could see it last for much of summer."**

But he said there were "still glimmers of hope" for farmers. "The saving grace at the moment is the sea surface temperatures in parts of the Coral Sea, Tasman Sea and Western Pacific haven't cooled down to the extent that we'd normally expect in an El Niño event," Mr White said.

"So if those waters' temperatures stay a little above average, then there's always potential for a bit more moisture to feed into eastern Australia at times.

"But if those temperatures cool off, we're definitely in for

about six months of below average rainfall. It doesn't mean every month will be dry but it means that overall, the total rainfall for the next six months will be below average."



FOR SALE

Classified Advertising in the Uki News

TABCDEFGHIJKLMNPOQRSTUVWXYZABCDEFGHIJKLMNPOQRSTUVWXYZ12345

TOTAL of 85 characters or spaces per line at 10 point for \$5 per line

Talk to the volunteers at the CTC at the Buttery Building next door to Uki Pies, to arrange your ad in the next issue.



Promotional Opportunity for Uki Businesses

The first release of the Uki Business Streetscape map over Easter and the Images of Uki art exhibition was a huge success resulting in an article in the Tweed Valley Weekly.

Hopefully the Uki Residents Association will soon arrange for more pads of the map to be distributed around the village.

Local businesses who would like to be included on the reverse side can make enquiries at the Uki Community Technology Centre.

The Uki Village Streetscape map can also be customised to feature your business.

Please contact us for more information.

Ph: 66 795 399 or Email: ctc.uki.nsw@gmail.com

UKI COMMUNITY TECHNOLOGY CENTRE



Uki and South Arm Historical Society Inc.

Thanks

Our Society owes a great deal of thanks to our local community, who have wholeheartedly supported us throughout the last forty years. As time moves on, our archives will become more and more critical, and we hope they are as fascinating to the following generations as they are to us.



Located in the beautiful Northern Rivers, Uki, according to a report of the Lands Department, was never officially proclaimed; "it just grew up". Although there are many tales about the name "Uki" - including a story about timber brands - the name originates from "yugoi", meaning "bandicoot" in the local Ndonguwal language.

The **Uki and South Arm Historical Society** volunteers have been preserving our community history for over four decades. We provide research services, village walks and happily share our stories and archives with residents and visitors.

Please come by and see us and hear a few local legends, or perhaps even meet one while you're here.

We provide research services, village walks and archiving facilities to our residents and visitors. Please come and visit us at 1462 Kyogle Road, Uki, New South Wales.

Please contact us for any research inquiries, and we would be happy to help you.

Wednesday: 10 - 12 pm

Thursday: 10 - 12 pm

Saturdays: 9am - 12pm - Exhibition only

Buttery Bazaar Markets: the third Sunday of every month.



C J Woodcock Plumbing

All plumbing
Rain water tanks
Maintenance
Roofing
Drainage
Hot Water
Bathroom Renovations

Lic No 198531c

Based in UKI—call Craig for 35 years experience.
Ph: 66795 405, Mobile 0428 795 405,
Email: cjwoodcockplumbing@gmail.com



Uki Supermarket
Friendly service....

Groceries Fruit & Veg	Ice
Gluten-free & Organic Products	Fuel
Meat	Gas
	DVD hire

Open weekdays 7.30am to 6pm
Sat & Sun 8am-5pm
Main Street, Uki Ph: 6679 5136



PRUDIE'S PRISTINE CLEAN

ABN 803 743 396 11

- ❖ Domestic Cleaning
- ❖ Commercial Cleaning
- ❖ Window Cleaning
- ❖ Gutter Cleaning
- ❖ Garden Maintenance

PER HOUR - PLEASE CALL - 0468 948 249

Uki Buttery Bazaar Entertainment

Sanne Grace Kenna

Uki Buttery Bazaar Market

To book a stall at the monthly Uki Buttery Bazaar please contact the Market Coordinator on 0411 483 177

PLENTY OF PARKING AT RAINBOW BRIDGE AND SWEETNAM PARK

AUGUST Buttery Bazaar

Sunday 20TH AUGUST 2023



Celestial Serpent Band

are a funky, rocking, hip-hop, dub n reggae, live band based in the Northern Rivers

Celestial serpent Band have been compared to Rage Against the Machine, Fat Freddie's Drop and politically lyrical underground rappers like "Immortal Technique"

Current members include Celestial Serpent on vocals and bass, Jake Mann on drums, Imandan on keys and vox, Sanne Kenna on percussion and vox. On top of band projects Celestial is also known for his solo performances and his sacred geometry art exploring deep concepts of esoteric symbolism and mysticism. This live sound journey will get your body moving, your mind thinking and your spirit connected through the unifying experience of music. Our message may vary from project to project but one thing always remains the same, the intention to either inspire or empower the audience and expand the mind through alternative ideas and philosophies.

The content of this work covers a broad range of topics including technology, alternative medicine, health, economics, history, metaphysics, spirituality, unity, magic, quantum physics, consciousness, Sacred geometry, etymology, Law and anything else considered to be of great importance in these times of great social and metaphysical change.



Mantlepeace

is the musical collaboration of Sanne Kenna & Jake Mann, both innovative multi-instrumentalists and composers.

This music showcases an original blend of influences from classical, folk, jazz, rock & ethnic world groove combined with the unique uplifting vocal styles of Sanne.

Mantlepeace create an adventurous, poetic, intimate and dynamic genre all of their own.



SEPTEMBER Buttery Bazaar

Sunday 17th SEPTEMBER 2023



Felicity Lawless and friends: featuring Paul A George

of Tijuana Cartel and MsEleneous

What a treat we are all in for this month!

Felicity will play some world music and reggae sets with clarinet and sax master MsEleneous, followed by some flamenco and middle eastern jams with guitar maestro Black Rabbit George followed by his electronic post featuring his magik guitar style.

Felicity Lawless stimulates the senses and elevates the soul with music fusing Gypsy, world rock and folk elements. Her sound is characterised by a flashy, Spanish guitar style, soaring vocal melodies and hypnotic rhythms. She performs with an energy that elevates and inspires while infusing her crowds with enthusiasm and joy.

From the streets and tapas bars of Spain and bustling Japanese live music venues, to Australian festivals, concert venues, bars, markets and restaurants, Felicity Lawless has delighted many diverse audiences with her journey through sound and emotion. Having honed her craft gigging relentlessly around Australia, it is little wonder that she has learned to capture and enchant audiences with virtuosity and sincerity.

Her project with Tijuana Cartel guitarist Black Rabbit George (Paul George) has sold out concert venues at HOTA and Dust Temple Gold Coast, Maleny.

Felicity Lawless is now collaborating with vocalist, clarinetist and sax mistress, MsEleneous who adds flourishes of virtuosic gypsy clarinet, saxophone and heart warming harmonies. They are currently releasing their first combined album Dream of Love live on all platforms and live.



Pain Management

By Peter Ganser
www.peterganser.com.au

NLP Master Practitioner
M 0444 561 541

SELF DEVELOPMENT

My Analogy of Pain

Pain in my view of the world has two or maybe three main components.

- The physical
- The emotional/mental
- The spiritual

The process to Disappear pain is focused on the emotional and mental component. It means that pain may not disappear completely if there is a physical component like a strain or broken bone, or infection. What the process does affect is the emotional intensification of the pain through the level of anxiety and stress that may accompany it. In some cases like headaches, it can Disappear the pain completely. I have also seen significant reduction in pain for people suffering migraines.

How to DO IT

Find a quiet space and focus on your pain. Then answer the following series of questions. They may sound a bit strange in relation to your pain, but answer with what first comes to mind.

Hint: It may help if you have a friend ask these questions so that you can stay focussed on the pain.



Rank your pain on a scale of zero to 10 where zero = no pain and 10 is the end of the world.
Describe the location of the pain. (Sometimes it can feel like it goes beyond your body.)
What is the shape of the pain? (eg like a disk)
How big is the pain? (eg like a basket ball)
What colour is the Pain?
What texture does the pain have? (eg Rough, spikey,

smooth etc)
How hard is the pain? (eg like Jelly, like a rock etc)
What is the rank of your pain now on a scale of 0 to 10?
If the rank has decreased significantly or is around 2, you can stop. If not cycle back through the questions starting at question 2. Where there is a change in the answer, acknowledge it and then move on.



A Final Word

You may still have some pain left; this will most likely be the physical component. If you still have significant and ongoing pain, see your medical professional for advice. Pain is a message that says, "There is a problem, attend to me". Do as your body commands and attend to the pain.

Loders Uki Store

Did you know that Uki was once home to the largest department store between Newcastle and Brisbane? The store had everything South Arm residents could want, even love!

Find out more at;
<https://historic-uki.com.au/a-s-loders-pioneer-store/>



UKI SAWMILL
TWEED VALLEY

BUY DIRECT

UKI TIMBER YARD
Sawn & Dressed
Hardwood Timbers
Building Materials
Furniture
Landscaping
Fencing
Slabs

We Deliver

Email: uki.sawmill@westnet.com.au
www.ukisawmill.com.au

Phone: 6679 5116

Smiths Creek Road, Uki
After Hours 6679 5255

Open 7 Days for Lunch and Dinner

OFFER: \$12 Dinner Specials, Pizzas

Pool Comp Wed, Trivia Thurs,

Jackpot and Raffles Fri.

Email: info@mountwarning.com.au

Website: www.mountwarninghotel.com.au

Facebook: Mount Warning Hotel Uki

Instagram: [mountwarninghotel](https://www.instagram.com/mountwarninghotel)

1497 Kyogle Road,
UKI NSW, 2484



Bottlemart

Hotel: (02) 6679 5111



Little Gallery update

The Little Gallery is excited to announce it will be welcoming three new artists into our local collective in August, including mixed media artist Turiya Bruce and ceramicists Peter Smith and Cathryn Binstead.

New work will be on display in our gallery from Tuesday the 8th of August, including a feature wall by resident artist Heather McClelland, called *Calming the Small*, opening Friday the 11th of August at 6pm at the Little Gallery. We look forward to seeing you there.

October's featured artist, Christine Mellor, discusses the temporality of life, and balances it with a sensitive and thought provoking, sense of renewal.

In November the little gallery features Marlena Basser's "Postcards from My Soul" exhibition. Marlena's exhibition will be a series of small works offering a rich tapestry of colour and abstract form representing her inner landscapes.

Farewell to the 'Waiting Tree'

As most people in the village will have noticed, the area surrounding the large hoop pine (affectionately known as the 'Waiting Tree') at the front of Uki Public School has been cordoned off for several days. We took this precaution because 3 large branches came crashing down unexpectedly last week, narrowly missing a staff member. We had a tree service company out the next morning who removed the unstable branches and assessed the remaining branches. Our next step was to engage a Level 5 arborist to do a comprehensive report of the health and safety of the tree. His report stated that the tree is in rapid decline and needs to be removed. This is not something we want to be doing to our old, large and significant trees, but the safety of our students, staff and any member of the community must come first. Several people passing by have also popped in over the last few weeks to express concerns about the state of the tree. So, sadly, it must go. We'll keep everyone updated on the removal plan.

Rachel Watkins
Principal Uki Public School



94% of Tweed Shire is Bushfire Prone

Mr Connell said RFS guidelines had been updated since the Tweed's 2012 mapping to recognise the risk of grasslands as a fire hazard, resulting in an additional 20% of rural land being newly mapped. We want to work together to plan for the future, to ensure the Tweed grows and evolves in a sustainable and safe way,"

"Strategic planning is needed to ensure future land uses are in appropriate locations to minimise the risk to life and property from bush fire attack. The new mapping takes into account changes to the environment, including climate change, and the additional risks posed by grasslands and pasture under these conditions.

In the Tweed, about 25,000 additional hectares of land have now been designated as bushfire prone under the new map, which is an approximate 20% increase in land area from the previous 2012 mapping.

"This means approximately 94% of the Tweed Shire is now classified as bushfire prone land. If you live in bushfire prone land, you should have a bushfire survival plan. This is about keeping our community safe."

To prepare your bushfire survival plan, visit rfs.nsw.gov.au/plan-and-prepare/bush-fire-survival-plan.

For additional information on the NSW Government and Council's development controls for bushfire prone land, and access to the mapping, visit

tweed.nsw.gov.au/bushfire-prone-land

Residents whose properties are located on land classified as bushfire prone are advised to prepare a bushfire survival plan.



Notify us of your planned burn

If you are planning to burn on your property, you need to let us know before you light up.

Notifying us of your planned burn can help reduce unnecessary emergency calls. You also need to let your neighbours know at least one day ahead




NSW RURAL FIRE SERVICE

FAR NORTH COAST

(Ballina, Byron and Tweed Shires)

24 HOURS BEFORE YOU LIGHT ANY FIRE, YOU MUST CALL THE
BURN NOTIFICATION LINE

1300 632 174



02 6679 7228 **SOLAR SYSTEMS**

★ Installations ★ Repairs & Supplies

Sunbeam Solar are a local business who have served the Tweed and Byron shires for the past 21 years. We are committed to providing clients with solar power systems that suit their needs, helping to significantly lower their energy costs or putting an end to their electricity bills

Government rebates are available for both types of solar, grid connect or stand alone systems. We offer competitive prices and installation of the highest quality. We have a track record of supporting our local clientele, providing back up service and warranties.

Sunbeam Solar have recently completed an upgrade to the solar system at the Mt Warning Preschool. We are preparing the new system for batteries so they will have backup power in case of emergencies, such as bushfires or floods.

For more information please contact:
sunbeamsolar@bigpond.com
(02) 6679 7228
Find us on Facebook

ADVERTISE HERE

For
YOUR BUSINESS DETAILS
to be
Distributed to 1200 residents living between
Byangum Bridge and Tweed Shire boundary

PLUS

Average over 3,000 readers of online
PDF version at www.ukivillage.com.au

BUSINESS CARD
Landscape - 92.5mm Wide X 62.5mm High
\$30 per issue

QUARTER PAGE
Portrait - 92.5mm Wide X 129mm High
\$60 per issue

HALF PAGE
Landscape - 190mm Wide X 129mm High
\$100 per issue

Send your details and artwork to
theukinews@hotmail.com

Invoice after publication - published bi-monthly Ads continue in subsequent issues unless advised otherwise before advised deadlines. Reminder emails sent.



Louise Bally

A recent technology created by OpenAI is taking the world by storm. It is the introduction of AI advanced language model assistance, available to the general public, namely Chat GPT. The basic free Chat GPT (<https://freechatgpt.chat/>) can provide various benefits when used for communication and assistance. However, there are also drawbacks that need to be considered. Let's explore the pros and cons of using Chat GPT.

Pros of using Chat GPT

1. Natural Language Processing:

Chat GPT excels in understanding and generating human-like text. It can comprehend complex queries, provide detailed responses, and engage in conversations that simulate real human interactions.

2. Versatility

It can be employed in a wide range of applications such as customer support, problem solving, content generation, creative writing, and educational purposes. Many people use it as an advisory service on a wide range of subjects. Chat GPT's versatility allows it to adapt and fulfil different needs. Chat GPT can provide general guidance, answer coding-related queries, or provide high-level explanations of various programming concepts. It may be helpful in assisting with initial research, providing references to resources, or helping with pseudo code generation. Nevertheless, for in-depth coding tasks, using dedicated programming tools and resources is advisable.

3. 24/7 Availability:

AI-powered Chat GPT systems can operate continuously, providing assistance day and night. This is particularly useful for global businesses or organizations that require round-the-clock support.

4. Scalability:

Chat GPT can handle multiple concurrent conversations simultaneously. It can cater to a large user base without significant delays, ensuring quick response times and efficient handling of inquiries.

5. Constant Learning and Improvement:

Language models like Chat GPT are trained on vast amounts of data, continuously improving their performance over time. This ensures an ever-growing knowledge base and an ability to learn and adapt to new information.

Cons of using Chat GPT

1. Lack of Context Awareness:

Although Chat GPT shows impressive language understanding, it may struggle with context. It might sometimes misunderstand queries or provide irrelevant responses, particularly in situations where specific context is crucial.

2. Possibility of Biased Responses:

If not carefully monitored and trained, Chat GPT may generate biased content based on the input it has been exposed to during training. Biases from the underlying data can inadvertently influence the responses it generates.

3. Limited Real-World Experience

Despite extensive training, Chat GPT lacks real-world experiences that humans have. It can't provide wisdom gained from personal experiences outside the text-based data it has been trained on.

4. Inability to Think Critically:

Chat GPT operates based on patterns and probabilities derived from training data, rather than critical thinking. While it can generate coherent responses, it doesn't possess true comprehension or independent thought.

5. Data Privacy and Security Concerns:

Interactions with Chat GPT may involve sharing personal or sensitive information. It is essential to ensure proper data privacy and security measures to protect users' information and prevent misuse. Understanding the advantages and limitations of Chat GPT is crucial when considering its implementation. While it offers significant benefits in terms of language processing and versatility, its limitations, such as context awareness and biases, need to be addressed for optimal and responsible use.

It is worth noting that OpenAI has implemented safeguards and moderation systems to minimize misuse risk, and they actively address any concerns or vulnerabilities that come to light. Responsible usage and cooperation from users are crucial to maintaining the positive impact of AI technologies while mitigating potential harmful uses.



**PEOPLE DON'T HAVE A STRONG
INTUITIVE SENSE OF HOW MUCH
BIGGER 1 BILLION IS THAN 1 MILLION**

1 MILLION SECONDS IS 11 DAYS

1 BILLION SECONDS IS 31.7 YEARS.

Astrology

Paola Emma

Welcome to my August-September astrological musings

Venus' Retrogradation in Leo (Jul23/Sep3)

On July 23 Evening Star Venus, very close to the end of Leo, will appear to turn course, in very slow motion, toward the western horizon and the setting Sun. This will be the beginning of Venus' retro period, occurring every nineteen months approximately, and lasting about six weeks: a special time for many to re-write, re-live, and re-assess their relationships dynamics and fundamental values. You will be encouraged to discover/rediscover your true passion, exploring the best outlet for selfexpression, healing creative and relationship blocks, via the profound insight this inward looking period can provide.

Even after reappearing in the dawn sky as the Morning Star in late August or after turning Direct, on September 3, Venus will still transit Leo until October 9.

More directly affected by this Venus' transit will be those individuals whose Birth Charts have Sun, Moon Planets and/or Angles in Leo itself (between 12 and 28 degrees in particular), as well as the other Fixed Signs (Aquarius-Taurus-Scorpio); and, in a less obvious way, all the other Fire and Air Signs (Aries-Gemini-Libra-Sagittarius).

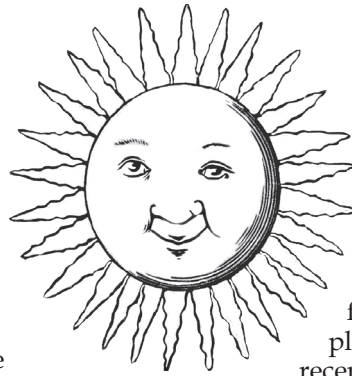
To enhance the self-reflective quality of this period Pluto, Neptune, Saturn and Chiron will also move in apparent backward motion. And Mercury will turn retrograde too, between August 24 and September 16. It is not that unusual for many planets to be retrograde at the same time, but it certainly indicates circumstances conducive to introspection and soul searching.

Mercury's Retrogradation in Virgo (Aug24/Sep16)

Overlapping the Venus Retrogradation by about ten days Mercury will begin its Virgo backward journey on August 24 and end it on September 16. These three weeks are traditionally deemed unsuitable for serious decision making, signing of important contracts, leases etc. Some astrological scholars find this traditional belief debatable though, the success or failure of any enterprise depending on many factors and not just the backward motion of Mercury! Most importantly, in my view, is the fact that Mercury's retrogradation will prolong Mercury's stay in Virgo (July 29 to October 5), generating extended opportunities to improve our practical skills and perfect our learning of new subjects. Great vibes also to declutter and clean up our messy spaces, all positive effects of the brain planet slowing down in clever and skilful Virgo, thus focusing more effectively on both practical and mental tasks.

An overall view: Grand Cross in Cardinal Signs, time for action

The Lunar Nodes, embodying the evolutionary destiny of the planet, moved into Aries and Libra on July 18, a



19 years recurring cycle. The shift coincided with the Cancer New Moon and a difficult configuration involving Sun, Moon, Pluto and the Lunar Nodes (Grand Cross in Cardinal Signs). The 90° angle Pluto-Nodes will be exact on July 29, but will continue to have effect for a few more months. This transit in fact links Pluto, planet of radical endings and beginnings, with recent Eclipses (April-May) and upcoming Eclipses (October), our planet's evolutionary and regressive trends.


Not surprisingly the news from the world are even more troublesome than earlier in the year, with many extreme events unfolding: widespread escalation of conflicts, fight over vital resources, massive exodus from impoverished, warn thorn countries to wealthier countries, themselves experiencing economic downturns. And, of course, the catastrophic climate crisis, now obvious to most discerning people, bringing records temperatures and exceptional weather to most Northern Hemisphere countries.

The signal for the collective is to break through the impasse of the Fixed Signs the Nodes have just left, to embrace action, to show courage, enterprise and initiative, to pursue high ideals, Aries' best assets. The South Node, now transiting Libra, represents what may impede our progress at this time. With its desire for harmony and ability for mediating, Libra is often paralysed in action, becoming indecisive and ineffectual, while trying to accommodate everyone viewpoint. Perhaps the present emergencies are proof that the time for endless negotiating is over and the time to initiate something radically new is here. The collective however is not some abstract entity that has nothing to do with us. The collective is made up of the sum total of all individuals, each carrying a shared responsibility with regard to our planet's destiny.

This configuration is the latest grave warning we need to heed: a make/break situation in need to be addressed urgently, in revolutionary and inventive ways.

If you wish to celebrate the advent of spring the Libra Equinox will take place on September 23, at 4.50 pm local time.

For more astrological insights please visit my site:
livingmoonastrology.com



THE VAULT
ANTIQUE & MODERN

Gary Hayley
0477 766 461
11am to 4pm Fri-Mon
1468 Kyogle Rd, Uki
(The Old Bank Building-
behind The Fair Trade Shoppe)

the_vault_uki
www.thevaultuki.com



OUR
MARKETING
WORKS

Local people. Local company. Local properties.

Offering personalised, genuine and professional service, NRPG have continued to achieve amazing results for their clients! If you're after a fresh approach to the sale of your property, by local people and a local business, contact Adrianna on 0422 265 871 or Paul on 0448 191 351!



PAUL
m: 0448 191 351
e: Paulstobbie@atrealty.com.au
Suite 2A Warina Walk Arcade,
114 Murwillumbah St, Murwillumbah



ADRIANNA
m: 0422 265 871
e: adrianna@atrealty.com.au
Suite 2A Warina Walk Arcade,
114 Murwillumbah St, Murwillumbah



@paulstobbieatrealty
@AdriannaNRPG